



Illinois QSO Party Experience

Harry Jones K9DXA

03/08/2016

Agenda

- How I found a portable – 3 county - site
- How I planned my portable ILQP operation
- How I operated the Illinois QSO Party, 2014 & 2015
- Do you really want to wait until October, 2016?

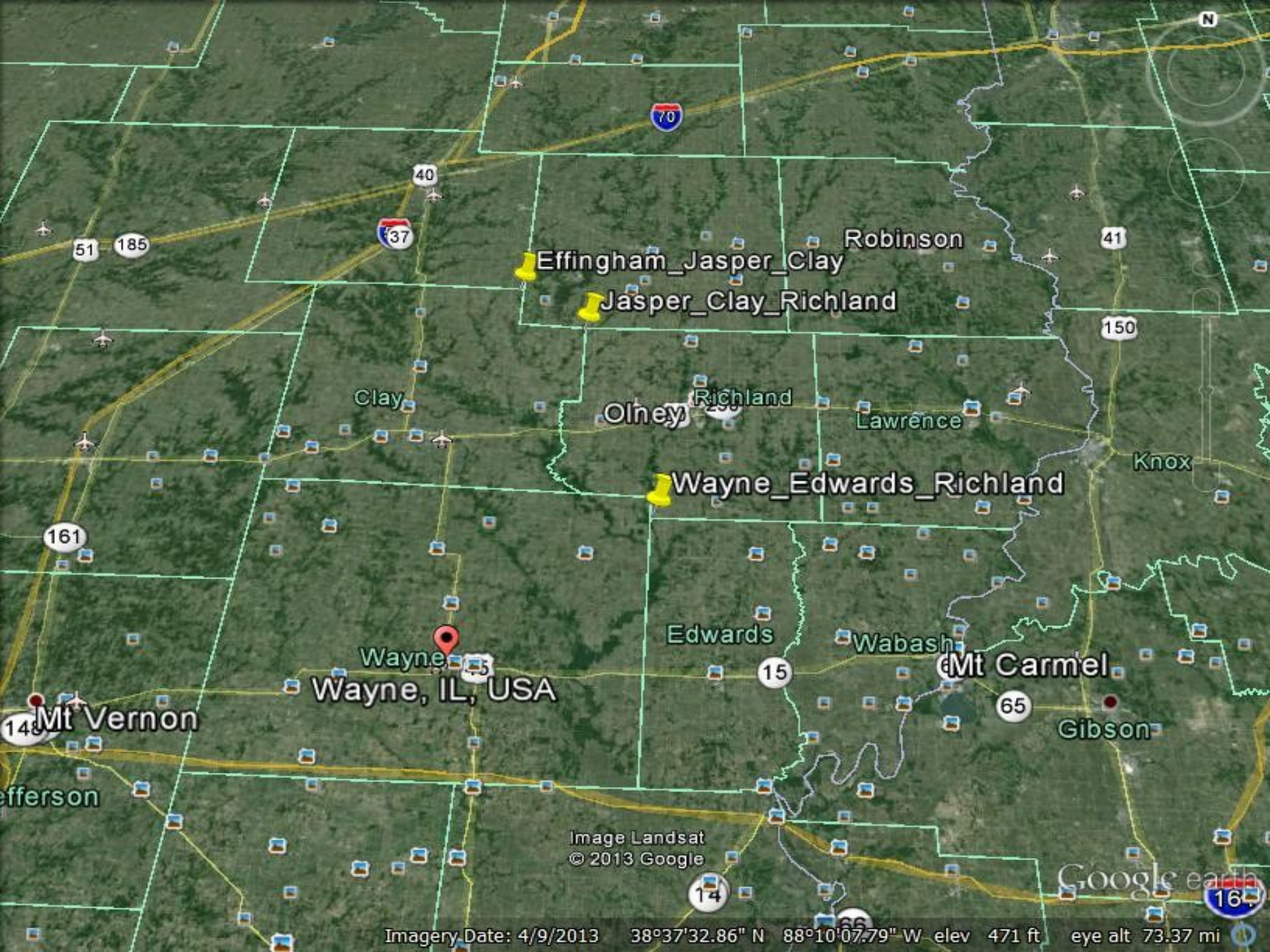
Finding A Portable – 3 County - Site

- Where are they? (Illinois)
- Were all covered last year? (No)
- Pick some – past year analysis shows counties with weak showing
- Aerial views available? (Hint: Google Earth)
- Filter sites found to about three
- If time available, go see them.....really good idea
- Pick a couple and get property owners' permission ...don't leave home without it!
- Get set up with ILQP reflector access and announce intent – or you may be surprised when you arrive to set up!
- Get road maps...take a GPS if possible – set it for county lines
- Consider where shack, antennas, shelter will be

2013 ILQP Activity



Effingham/Clay/Jasper



Effingham_Jasper_Clay

Jasper_Clay_Richland

Wayne_Edwards_Richland

Wayne, IL, USA

Image Landsat
© 2013 Google

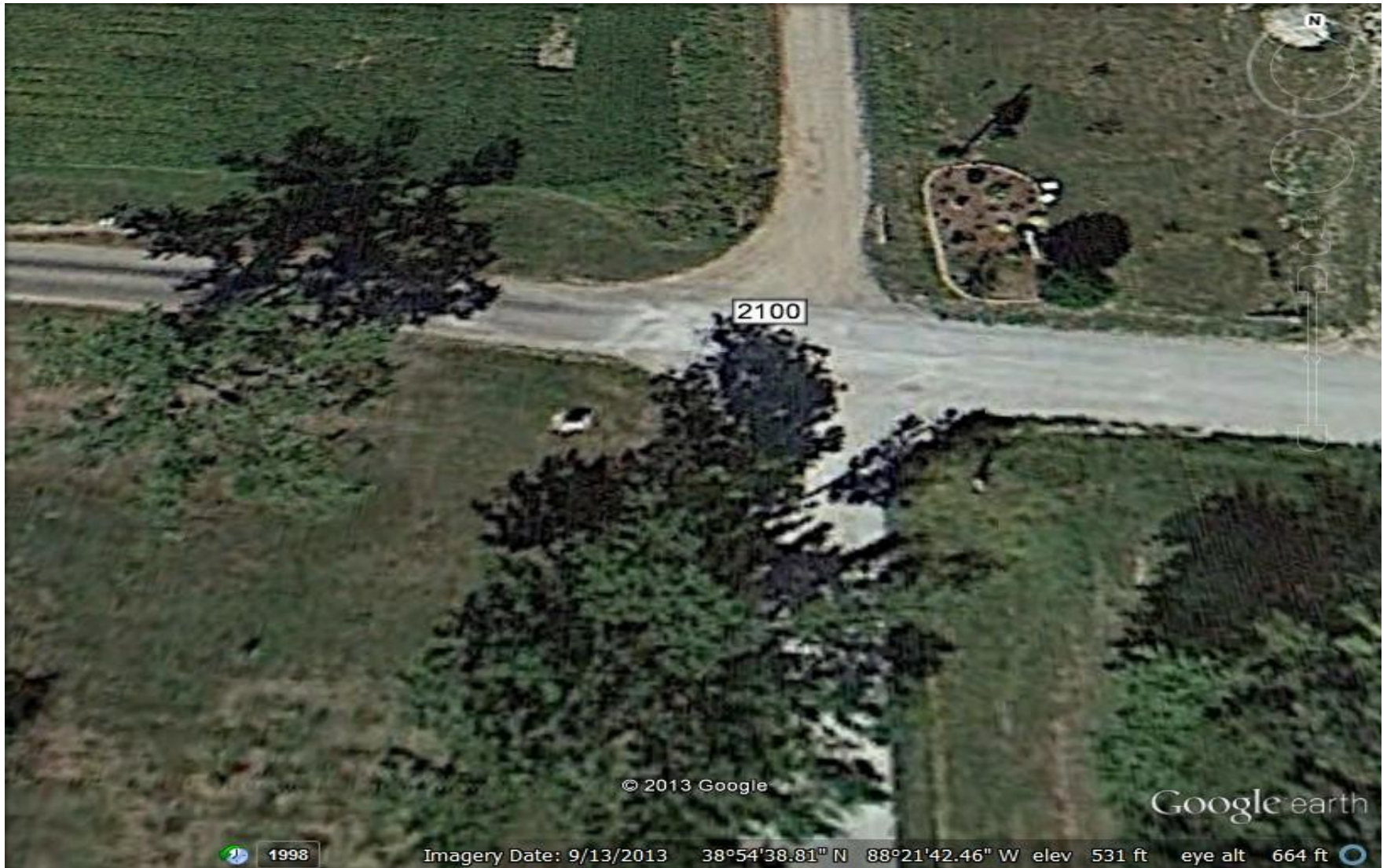
Google earth

Imagery Date: 4/9/2013 38°37'32.86" N 88°10'07.79" W elev 471 ft eye alt 73.37 mi

Jasper/Clay/Richland



Effingham/Clay/Jasper



1998

Imagery Date: 9/13/2013 38°54'38.81" N 88°21'42.46" W elev 531 ft eye alt 664 ft

I Am There



Planning the Operation

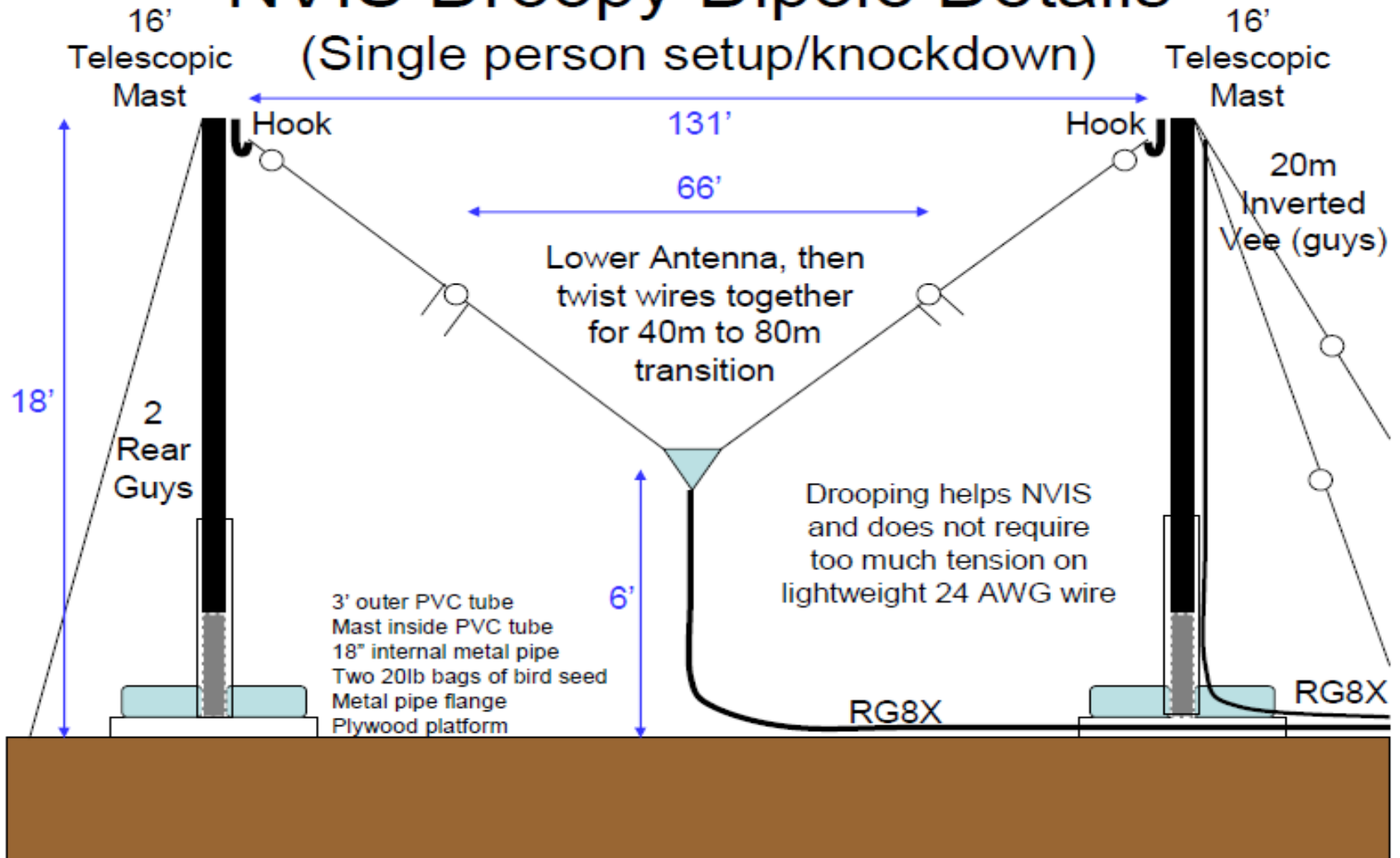
- Build, organize, test everything at home first !
- Rig and a spare rig
- PC, software and a spare. Practice w/software.
- Power, power distribution, lighting
- Shack shelter, and a back up plan
- Mics, keys, power supplies, tuners, and spares
- Operator comforts
- Before/after event activity
- Setting up at 8 AM, ready to go at noon
- Packing up at 8:00 PM in the dark

Antennas

- 2014: 80m-40m droopy dipole, 20m inverted-V = 2 masts
- 2015: Same droopy dipole reconfigured as inverted-V, same 20m inverted-V = 1 mast
- One length of RG8X line for each/each w/balun
- Each mast w/halyard to raise/lower antenna segment w/o moving mast Practice – practice setting up and tearing down!

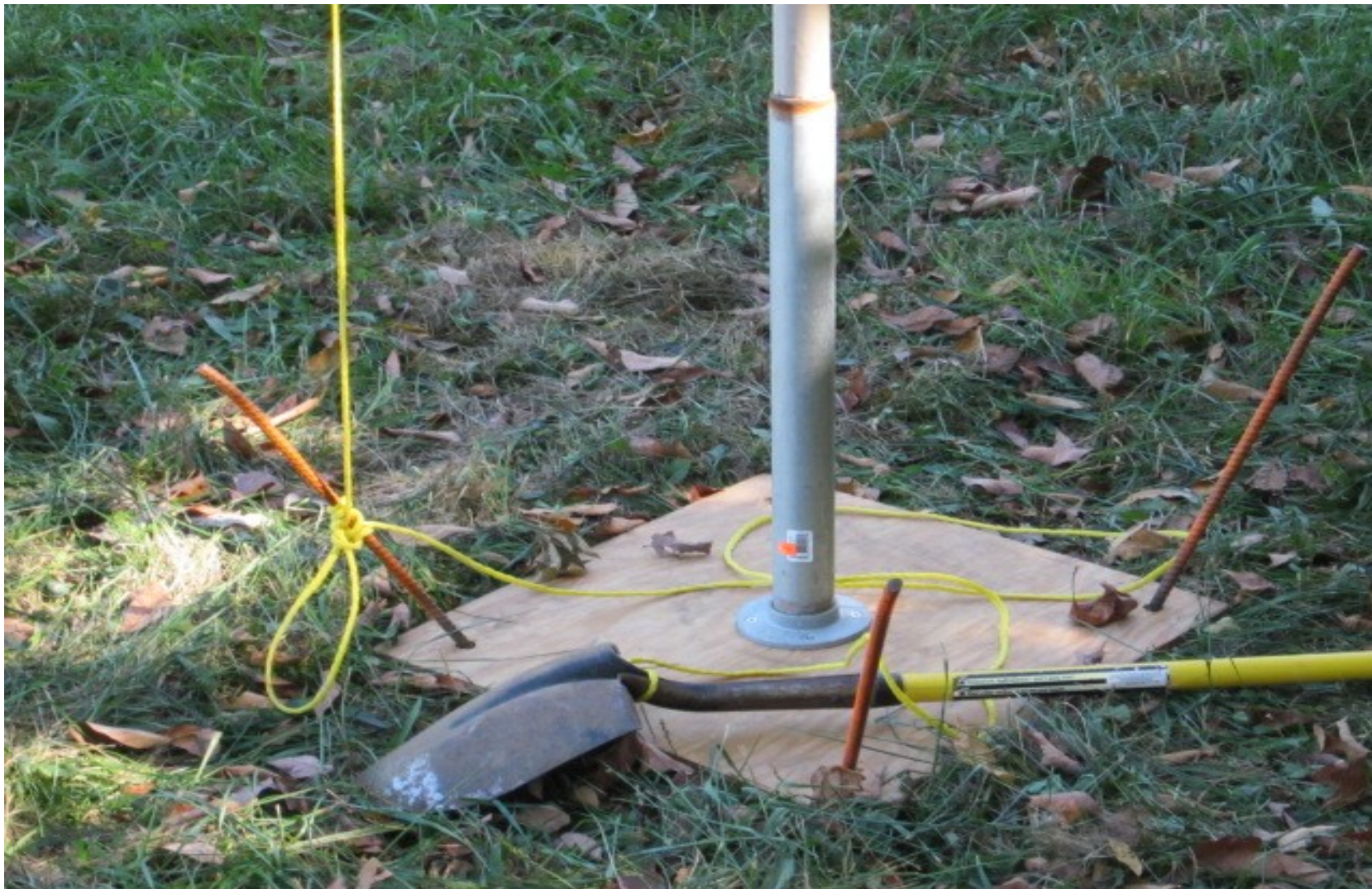
NVIS Droopy Dipole Details

(Single person setup/knockdown)



Used with permission from Dick AH6EZ

Mast Base



Mast Location



Mast/Antenna



The Shack - 2015



Difference Between Operating Modes?

- Mobile – capable of operating while moving, but may operate stationary, one county at a time.
- Rover- Like mobile, except operates from more than one location, may operate at county lines or corners. Operate while moving or stopped. Any power source, mobile or portable antennas.
- Fixed – Low or high power.
- Portable- Not permanent, antenna set up only for contest, operate county line or corner.
- Outside Illinois - Low or high power.
- Any category may be combined with QRP.

Google “IL QSO Party” for more info

Info About Scoring

- One county works a county SSB = 1 point
- One county works a county on CW = 2 points
- Counties, up to 5 DX, and states are multipliers
- Rovers/Portables park/set up - county line/point = 2, 3, or 4 multipliers
- Work SSB QSOs from a 4 county point = each QSO nets 4 points
- Work CW from a 4 county point = each QSO nets 8 points
- 4 county point works a 4 county point = 16 QSO points....WOW!

How To Run Up A Score Operating

- Run the frequency
- Use a computer with logging software – N3FJP
- Keep an eye on multipliers – you might have to search and pounce to get more multipliers
- Work all 8 hours
- If you can operate CW, be willing to work SSB especially if you need more multipliers. Most operators on SSB.
- Bands to use, changing bands (maybe 20M, 40M, 80M)
- Each QSO or multiplier late in the contest will push your score up considerably

Using Logging Software Macros CW – For Example:

- F1 – CQ CQ ILQP K9DXA
- F2 – R QRZ
- F3 – K9DXA
- F4 – (Other Call) 5NN CLAY/EFFG/JASP
- F5 - CLAY/EFFG/JASP
- F6 – R (Other Call) 5NN CLAY/EFFG/JASP
- F7 – (Other Call) DE K9DXA

Sometimes County Hunters QSL

County Corner: Clay Co., Effingham Co., Jasper Co.
Portable - EM58tv - 2015 Illinois QSO Party

K9DXA

Confirming QSO with	Date			UTC	MHz	RST	Mode 2-Way	QSL
	Month	Day	Year					
								PSE TNX

Harry Jones
1561 Independence Ct.
St. Charles, IL
60174 U.S.A.
Email: k9dxa@arrl.net

My Results

- 2014 – 114,300
 - All time record QSOs from both Effingham and Jasper counties
- 2015 – 75,985
 - Certificate - 2nd: Illinois 3-county portable station

2015 Club Results

2015 ILLINOIS CLUB AGGREGATE SCORES

CLUB	SCORE	# ENTRANTS
PRIME ARA	994891	18
KANKAKEE ARS	253947	7
WESTERN IL ARC	152271	9
FOX RIVER RADIO LEAGUE	127692	6
GREEN RIVER VALLEY ARS	101361	3
METRO DX	87996	4
FULTON COUNTY ARC	67370	2
SANGAMON VALLEY ARC	57480	4
JACKSONVILLE ARS	49725	1
ROCKFORD ARA	48768	1
DUPAGE ARC	41857	5
TWIN CITIES ARC	36126	1

Do You Want FRRL to Climb Higher?
(or do you just want to have fun?)
(or both?)

- More FRRL members active, with a mission
- More FRRL members working from multi-county points

Why Wait For October 2016?

- ARRL National Parks Program – Activate Parks!
- Field Day
- QRP Contest Portable
- Radio in the park
- 2016 ILQP

Get Started !!!